

# UPPER ELMERS END ROAD, BR3 £565,000



408 Upper Elmers End Road  
Beckenham Kent BR3 3HG  
0208 166 0400



An extended four bedroom family home located ideally for Eden Park Train Station and Langley Schools.

The ground floor comprises of entrance hall, lounge, extended dining room with two velux windows, modern fitted kitchen and utility room with W.C.

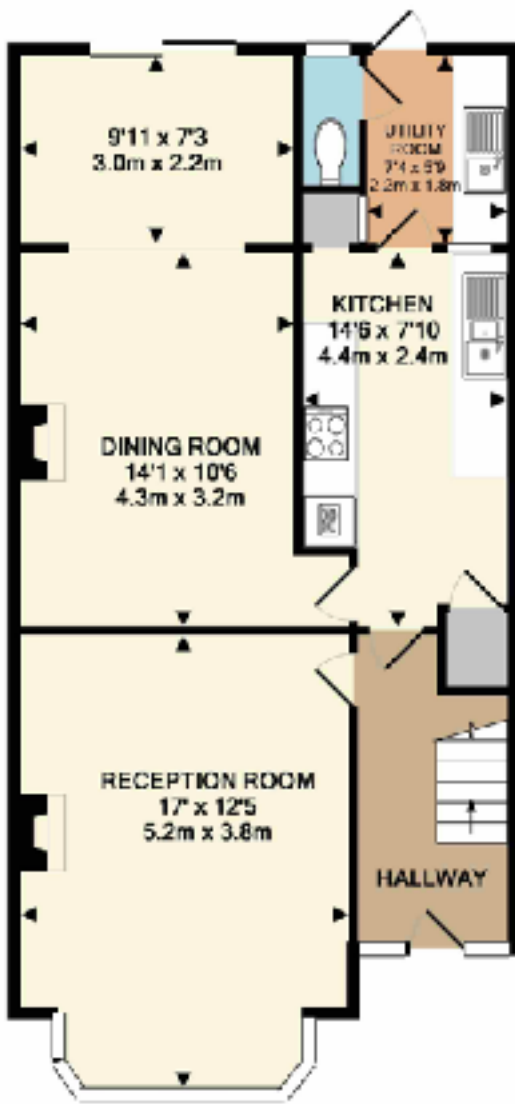
The first floor comprises of three bedrooms and a family bathroom.

The second floor comprises of a large double bedroom with ensuite area.

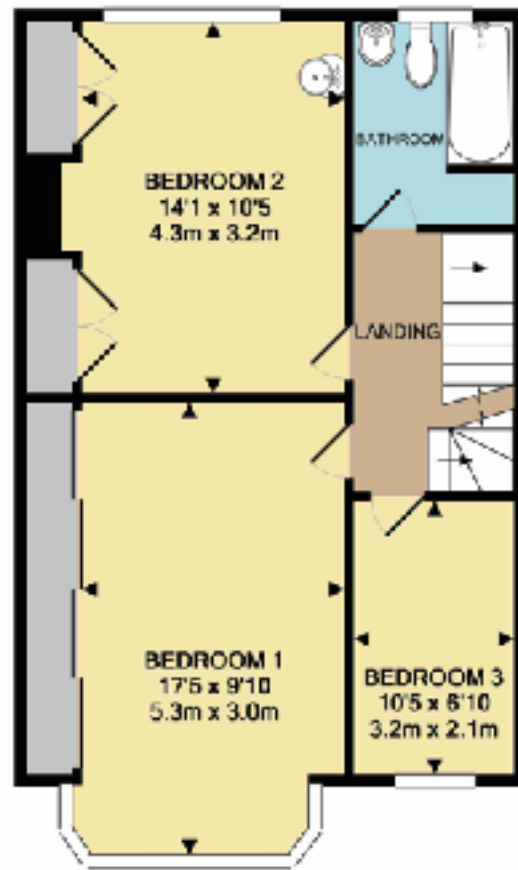
The property benefits from a garage at the rear with an additional parking space, front and rear garden approx 100ft south facing, double glazed and gas central heating.

**CALL US ON 0208 166 0400**

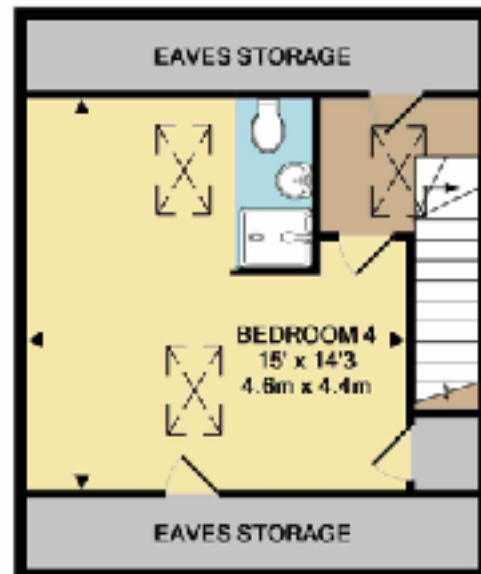




GROUND FLOOR



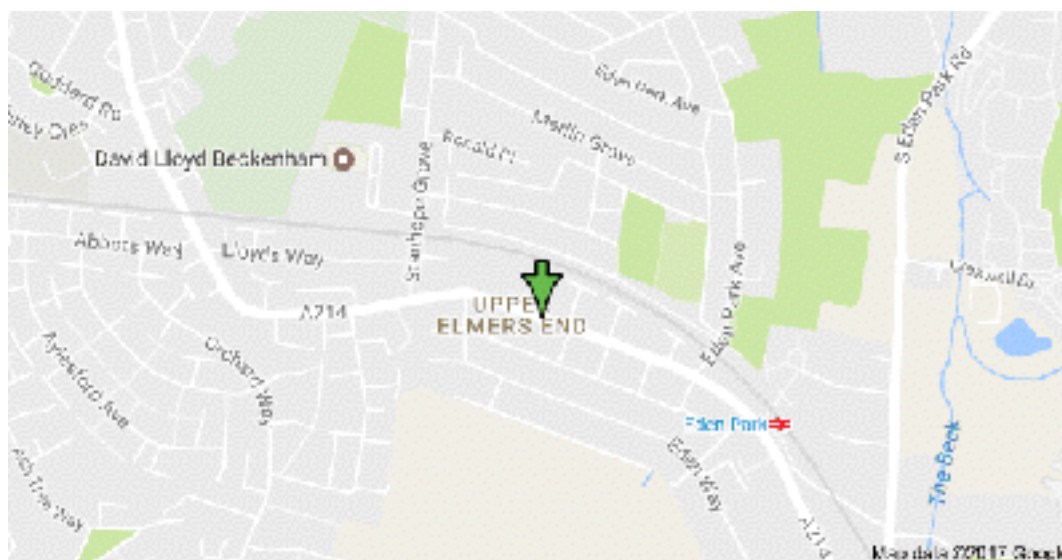
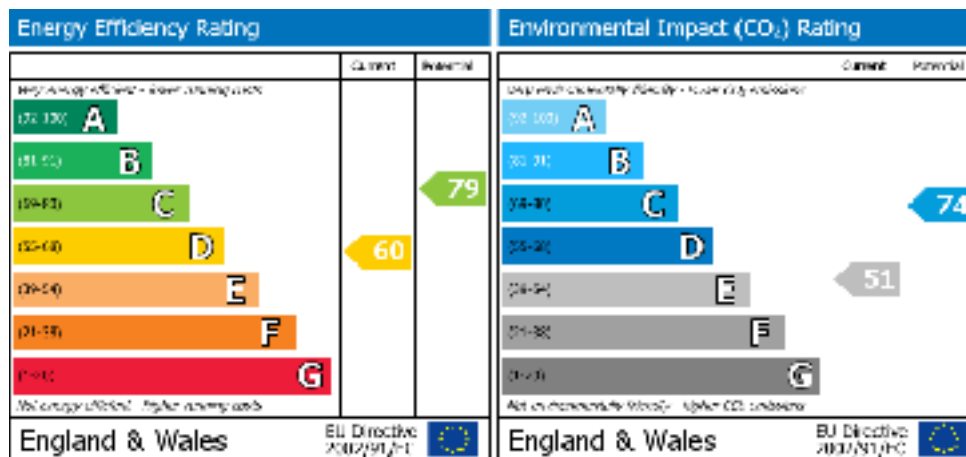
1ST FLOOR



LOFT ROOM

TOTAL APPROX. FLOOR AREA 1464 SQ. FT. (136.0 SQ.M.)

Measurements are approximate, not to scale and for illustrative purposes only.  
[www.edenrealty.com](http://www.edenrealty.com)  
 Made with Metplot ©2017



These particulars have been prepared in good faith to give a fair overall view of the property; they do not constitute an offer and will not form part of any contract. We make no representation about the conditions of the property nor that any services or appliances are in good working order; this should be checked by your surveyor. Furthermore, you should not assume that any items or features referred to in these particulars or shown in the photographs are included in the sale price. Your solicitor should check this as part of the normal conveyancing process.

