

SULTAN STREET, BR3

£385,000



408 Upper Elmers End Road
Beckenham Kent BR3 3HG
0208 166 0400

office@langleyestateagents.co.uk



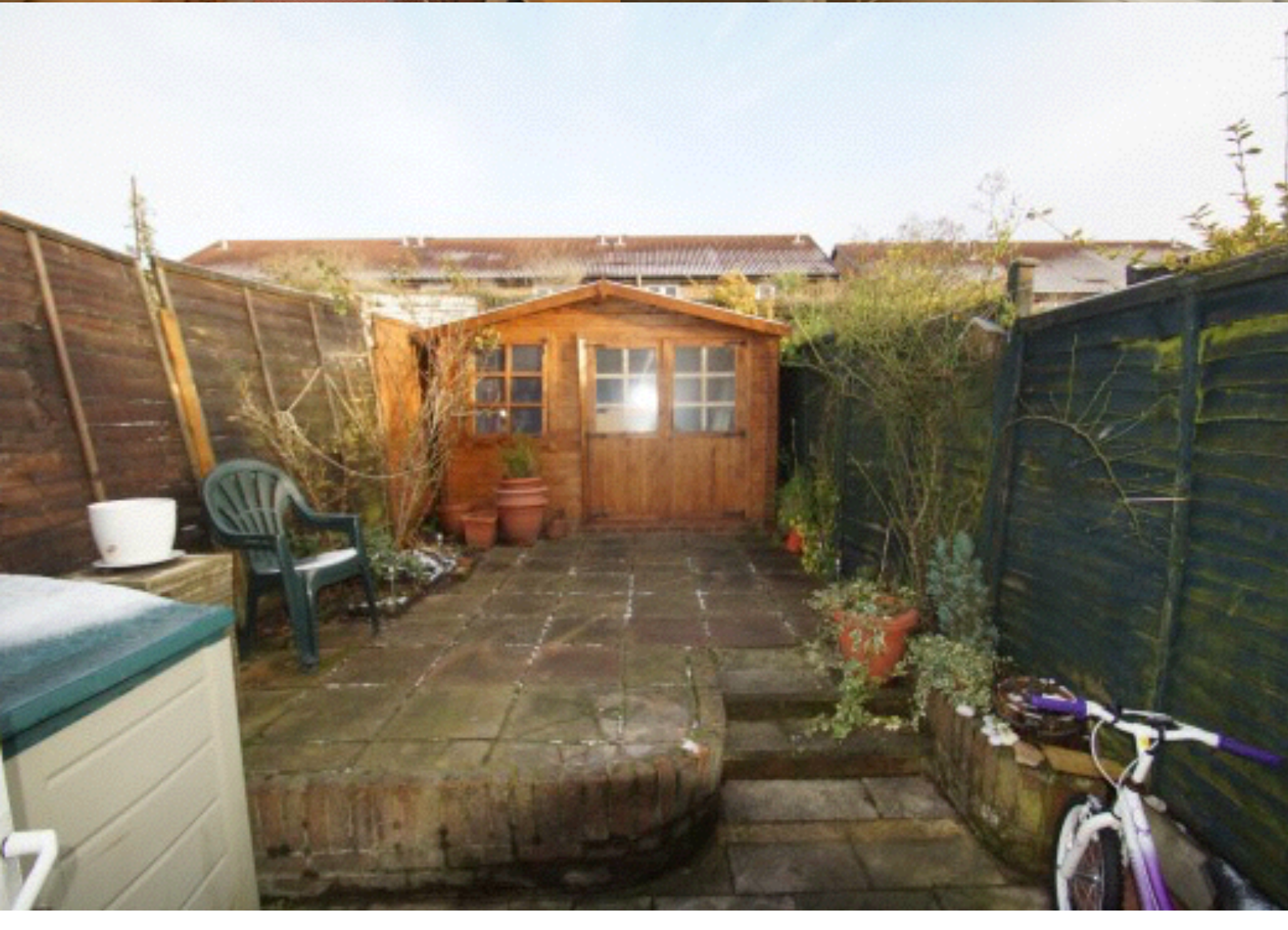
A very well presented two bedroom end of terrace in an ideal location within close proximity to Clock House and Kent House train stations and Birkbeck Tram station, also located within school catchment areas and local amenities.

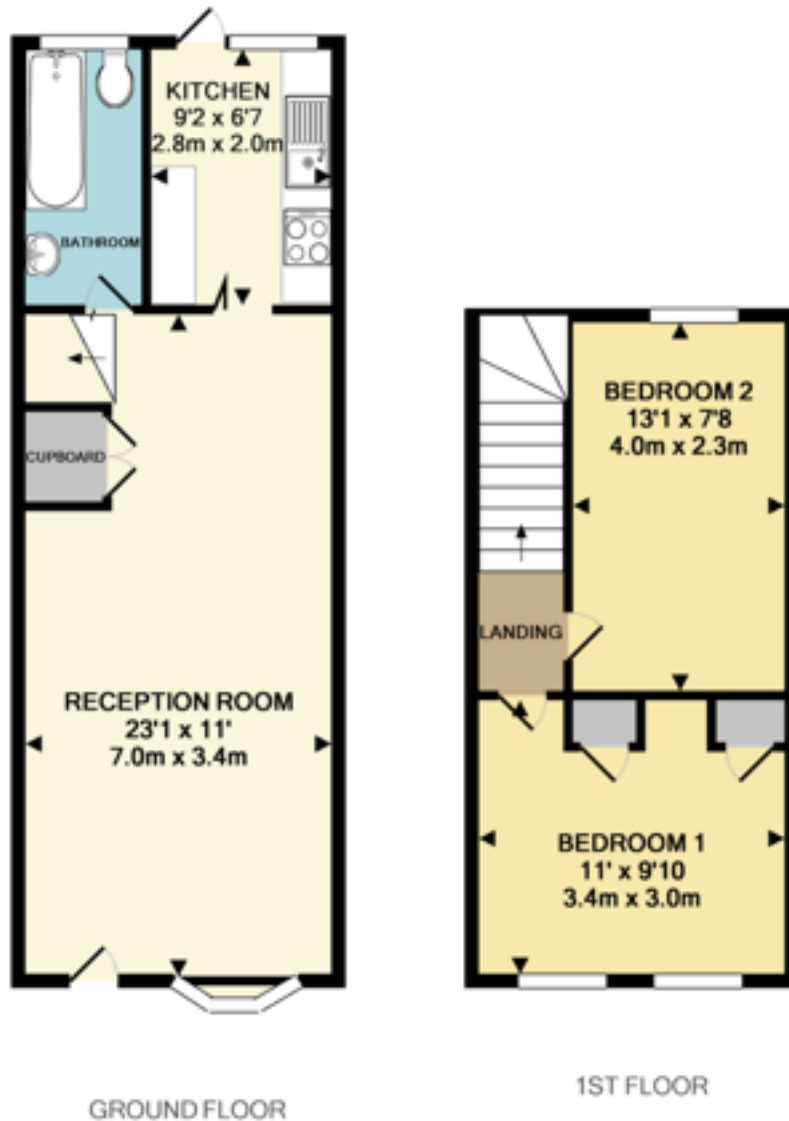
The entrance hall comprises of a large open plan lounge and dining room, fitted kitchen and modern bathroom.

The first floor comprises of two double bedrooms.

The property also benefits from a paved rear garden with shed, double glazing and gas central heating.

CALL US ON 0208 166 0400





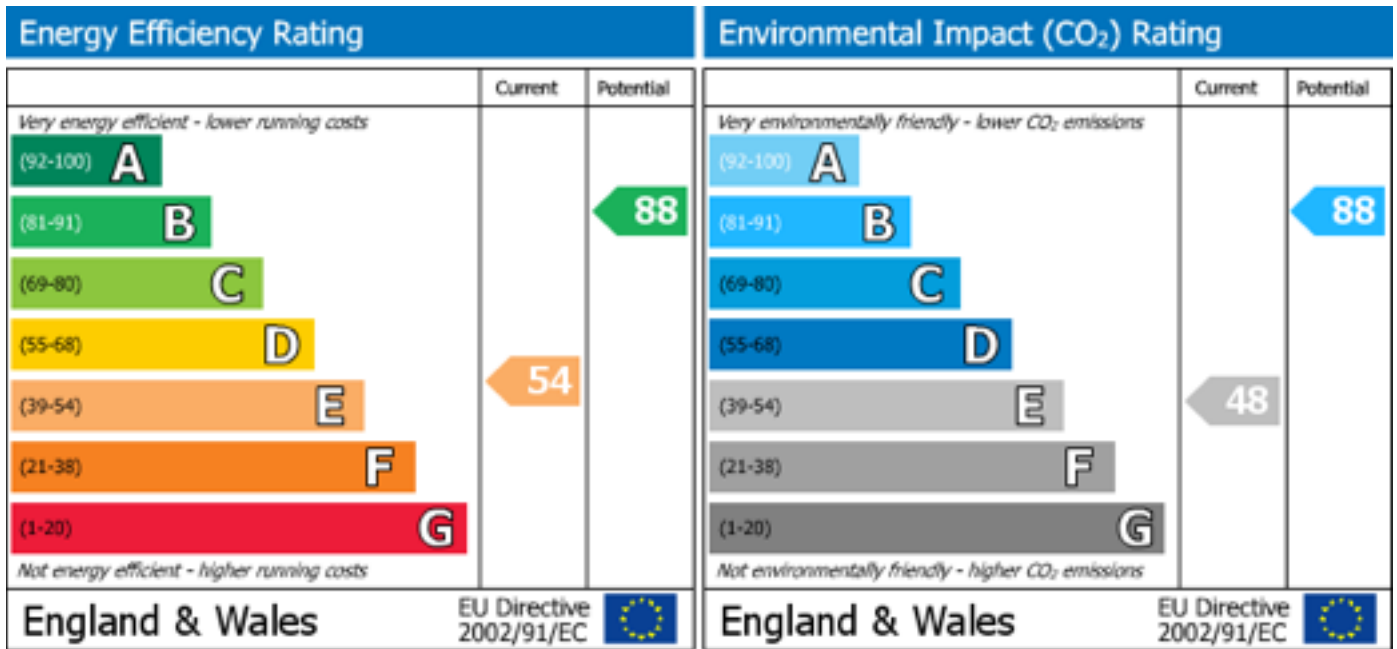
GROUND FLOOR

1ST FLOOR

TOTAL APPROX. FLOOR AREA 506 SQ.FT. (47.0 SQ.M.)

Measurements are approximate, not to scale and for illustrative purposes only.
www.epc123south.co.uk
 Made with Metropix ©2017

These particulars have been prepared in good faith to give a fair overall view of the property; they do not constitute an offer and will not form part of any contract. We make no representation about the conditions of the property nor that any services or appliances are in good working order; this should be checked by your surveyor. Furthermore, you should not assume that any items or features referred to in these particulars or shown in the photographs are included in the sale price. Your solicitor should check this as part of the normal conveyancing process.



The energy efficiency rating is a measure of the overall efficiency of a home. The higher the rating the more energy efficient the home is and the lower the fuel bills will be.

The environmental impact rating is a measure of a home's impact on the environment in terms of carbon dioxide (CO₂) emissions. The higher the rating the less impact it has on the environment.

