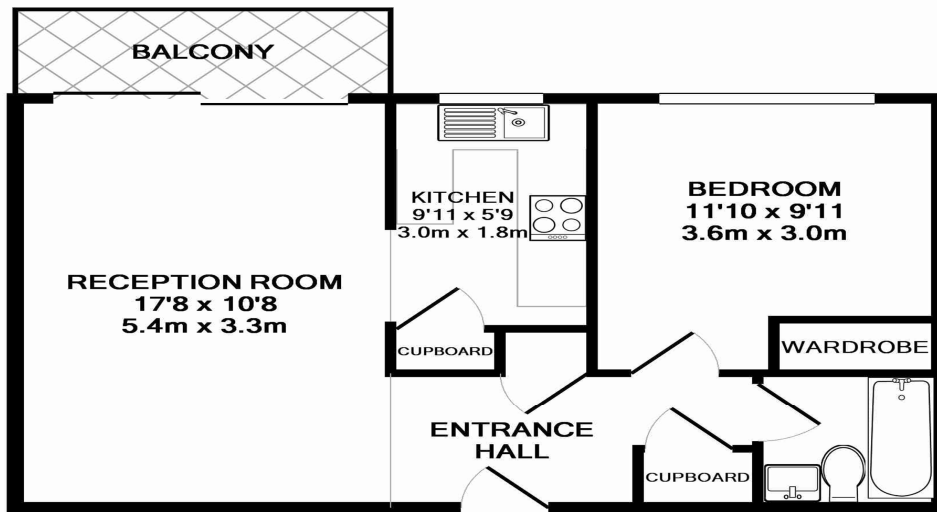


HAZELWOOD HOUSE

£189,950



A beautifully presented one bedroom apartment on the second floor located in Shortlands. The property comprises of an entrance hall, lounge with balcony and open plan kitchen, double bedroom and bathroom. The property benefits from double glazing, electric heating, communal garden and garage en bloc. An ideal property for first time buyers. The property is located within easy access to Shortlands Station, local amenities and Bromley Town Centre.



TOTAL APPROX. FLOOR AREA 43.2 SQ.M. (465 SQ.FT.)

Whilst every attempt has been made to ensure the accuracy of the floor plan contained here, measurements of doors, windows, rooms and any other items are approximate and no responsibility is taken for any error, omission, or mis-statement. This plan is for illustrative purposes only and should be used as such by any prospective purchaser. The services, systems and appliances shown have not been tested and no guarantee as to their operability or efficiency can be given
Made with Metropix ©2010

Energy Efficiency Rating		Environmental Impact (CO ₂) Rating	
	Current	Potential	
Very energy efficient - lower running costs			Very environmentally friendly - lower CO ₂ emissions
(92-100) A			(92-100) A
(81-91) B			(91-91) B
(69-80) C			(69-80) C
(55-68) D		72	(55-68) D
(39-54) E	49		(30-54) E
(21-38) F			(21-38) F
(1-20) G			(1-20) G
Not energy efficient - higher running costs			Not environmentally friendly - higher CO ₂ emissions
England & Wales	EU Directive 2002/91/EC		England & Wales
			EU Directive 2002/91/EC